



Votorantim Cimentos North America

 **Votorantim**
Cimentos

 **St Marys Cement**



St Marys Cement

Community Liaison Committee

March 12, 2021

Agenda

- ❖ **Welcome and Introductions**
- ❖ **Review of December 11th 2020 Meeting Minutes**
- ❖ **Complaints 2020 Year End**
- ❖ **Complaints 2021 Year to Date**
- ❖ **MECP Information on Mobile Monitoring Unit**
- ❖ **St Marys Cement Shutdown**
- ❖ **Questions Brought Forward in Advance of Today's Meeting**
- ❖ **Round Table**
- ❖ **Closing Remarks**

Welcome and Introductions



Community Liaison Committee

The next Community Liaison Committee is going to be held **March 12, 2021 at 10am**. Due to the COVID-19 Pandemic this meeting will be held virtually. Members of the public who wish to observe as the members of the Committee discuss information with respect to St Marys Cement can watch the live meeting online. Please see the Town of St Marys Event Calendar for the link to the online meeting.

Please submit any questions and concerns in advance of the meeting to kara.terpstra@vcimentos.com.

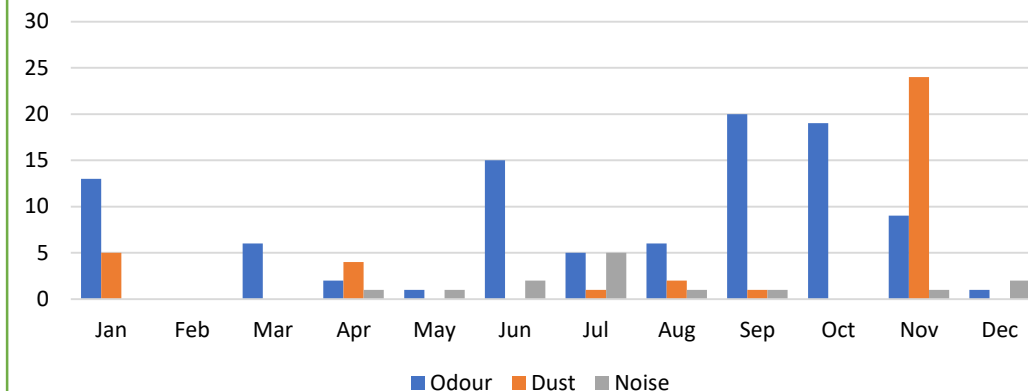
- ❖ Thank you to the Town of St Marys for allowing us to use their software
- ❖ Round Table Introductions
- ❖ Did anyone have any comments/concerns about the December 11th Meeting

Complaints 2020 Year to Date

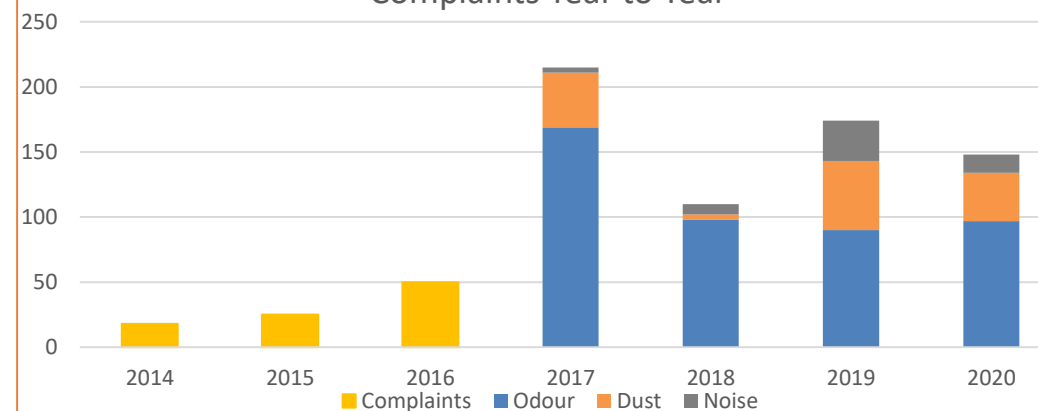
Complaints 2020 Year to Date

	Odour	Dust	Noise	Mention Health
Total	97	37	14	77
January	13	5	0	10
February	0	0	0	0
March	6	0	0	5
April	2	4	1	2
May	1	0	0	1
June	15	0	2	12
July	5	1	5	4
August	6	2	1	4
September	20	1	1	17
October	19	0	0	13
November	9	24	1	7
December	1	0	2	1

2020 Complaints



Complaints Year to Year



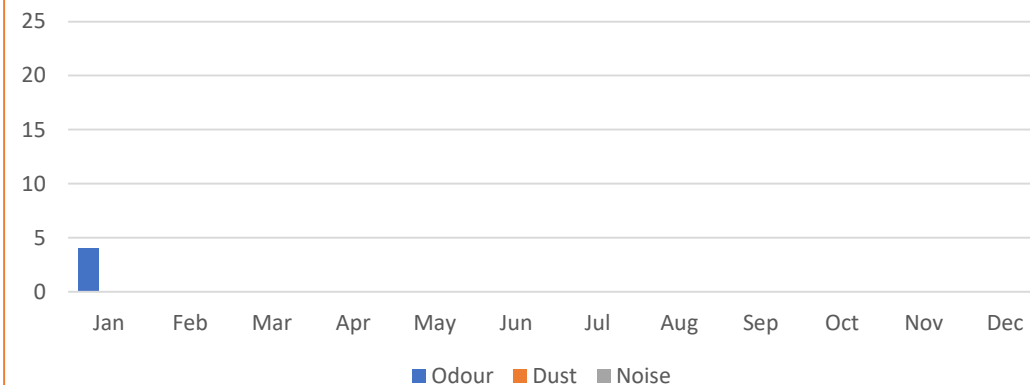
*Reminder – Complaints which 'Mention Health' are counted when a resident calls with an odour complaint and highlights that they have health concerns. They are not separate complaints received by the plant.

Complaints 2021 Year to Date

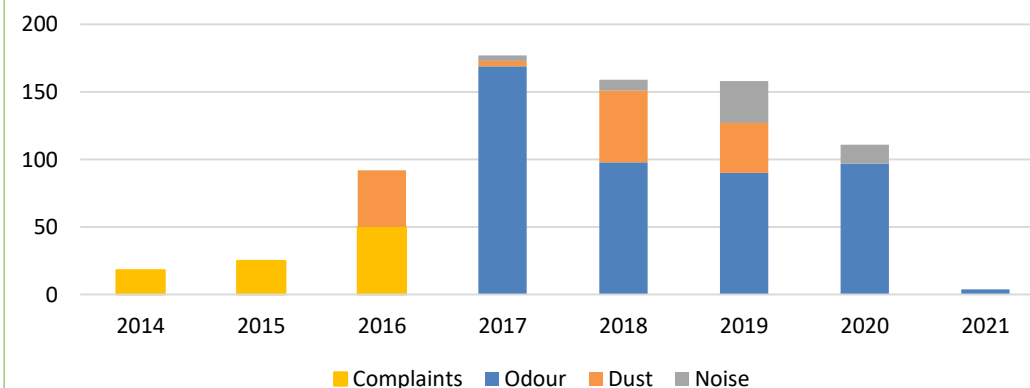
Complaints 2021 Year to Date

	Odour	Dust	Noise	Mention Health
Total	4	0	0	3
January	4	0	0	3
February	0	0	0	0
March				
April				
May				
June				
July				
August				
September				
October				
November				
December				

2021 Complaints



Complaints Year to Year



*Reminder – Complaints which 'Mention Health' are counted when a resident calls with an odour complaint and highlights that they have health concerns. They are not separate complaints received by the plant.

MECP Information on Mobile Monitoring Unit

- See other presentation

Shutdown 2021

- See other presentation

Questions Brought Forward in Advance

Email from Resident February 19th, 2021

Since our last discussions regarding odour, it seems like there has been less odour over the past few months. I know, this may seem like a surprise statement coming from me. My last recordings that I documented on my spread sheet were taken in mid-December. Since then I have not really noticed any specific odour issues that warranted documenting. I am assuming part of that is due to a reduced amount of time outside, however I am wondering if your software shows a difference in the prevailing wind patterns from the time you started recoding the wind direction to now?

Maybe the wind patterns are different here during the winter?? It may be too early to see a specific pattern.

Is it possible something has changed in your process or raw material or emissions capturing process?

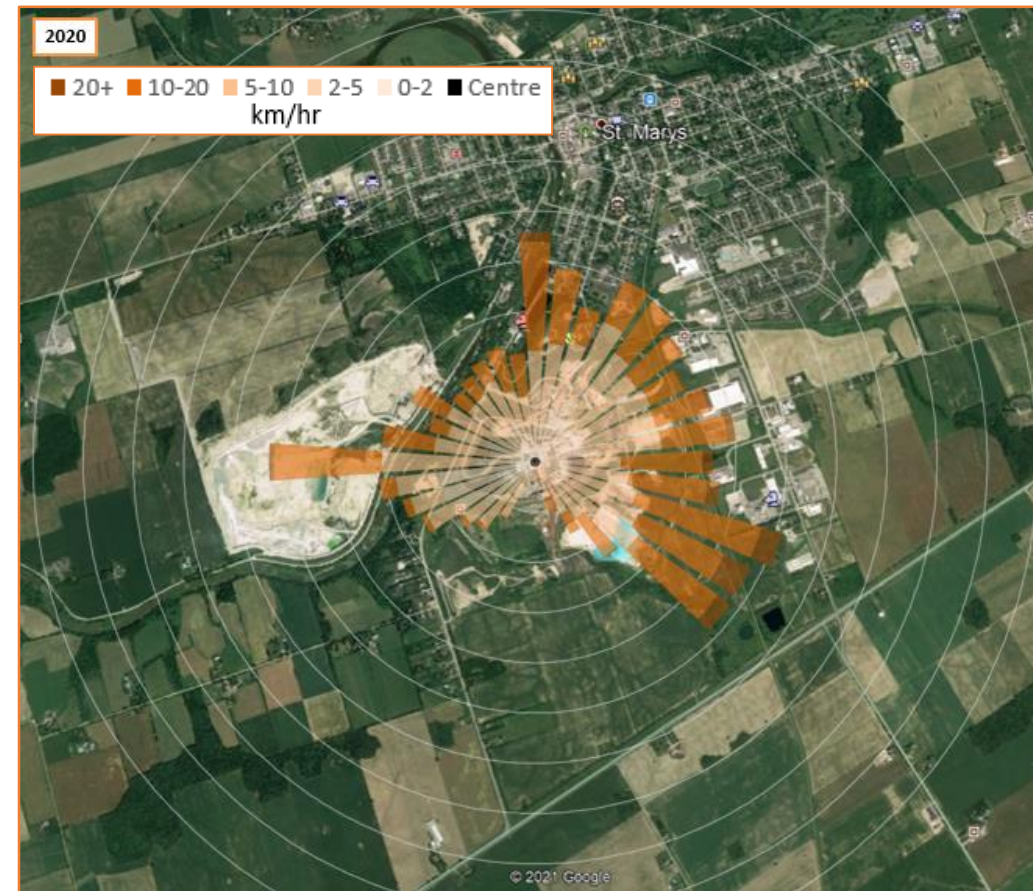
1. Wondering if your software shows a difference in the prevailing wind patterns from the time you started recording the wind direction to now.
 - See next slides
2. Maybe wind patterns are different here during the winter
 - See next slides
3. Is it possible something has changed in your process or raw material or emissions capturing process?
 - We were in a shutdown for February 2021, but operations and process were the same in December 2020 – January 2021.

Wind Projection 2016 to 2020



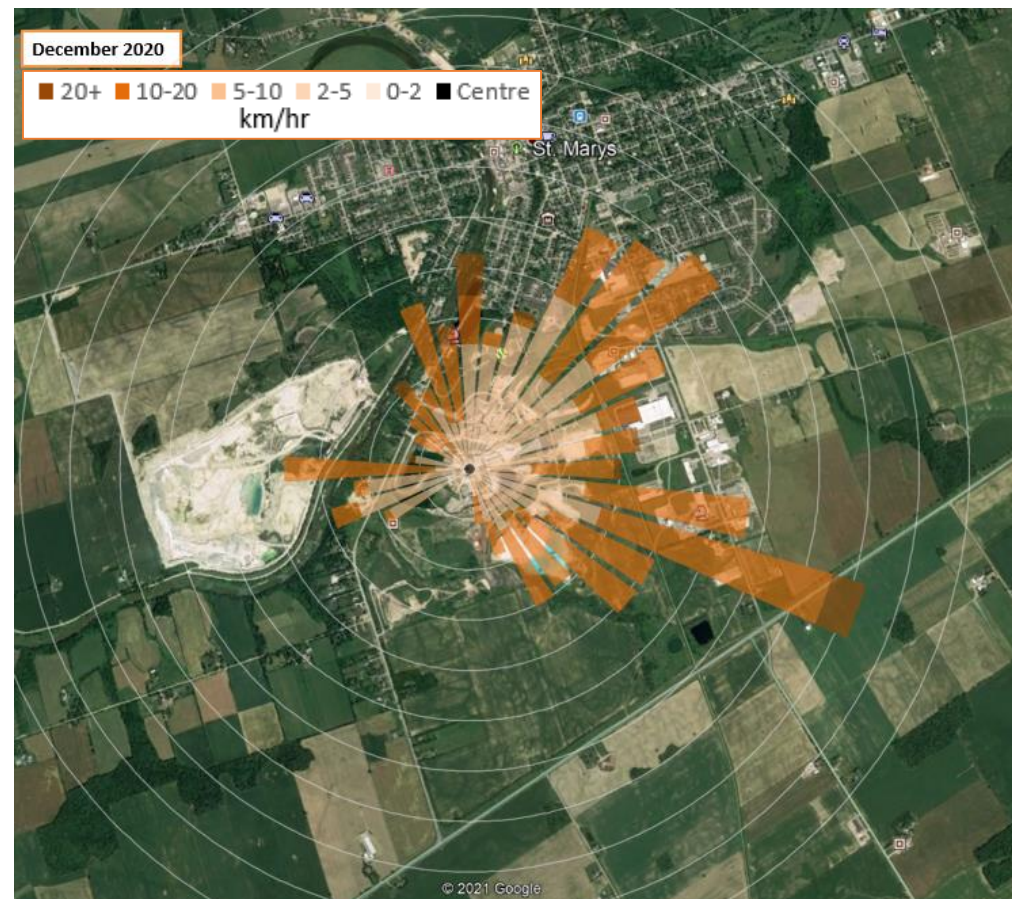
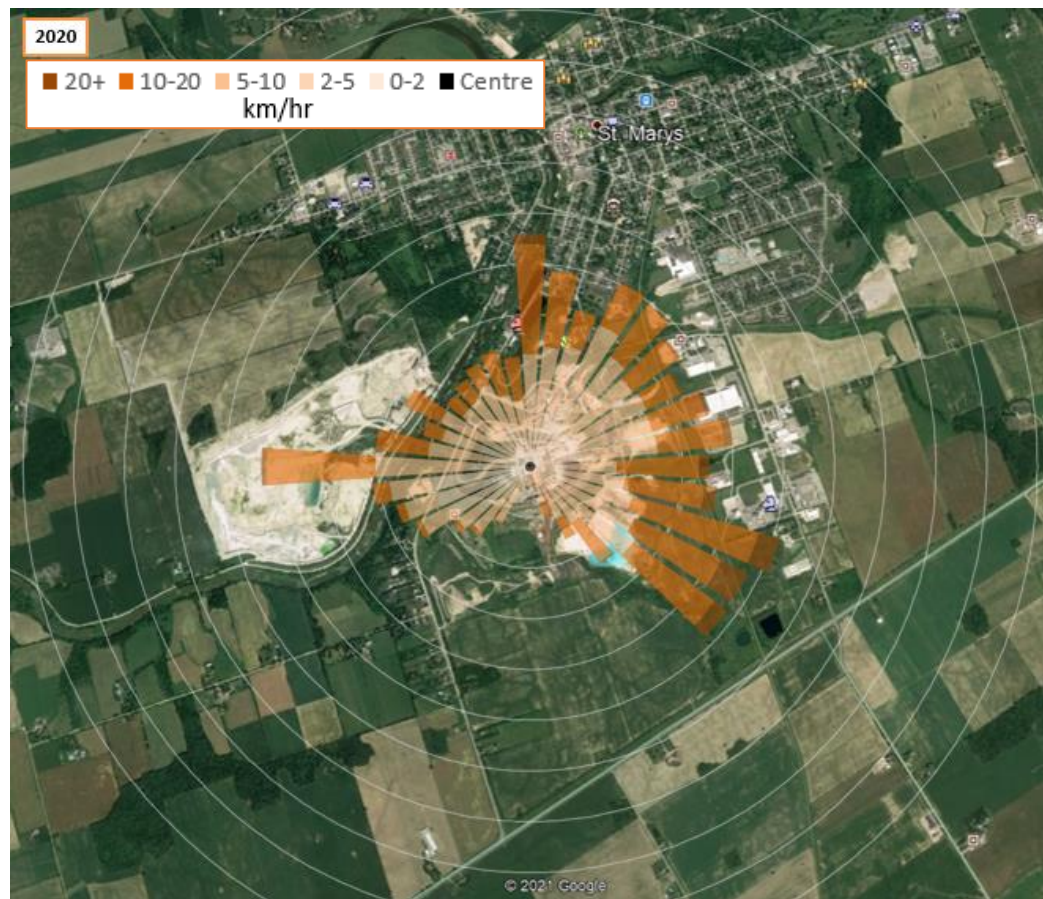
- St Marys Cement has a weather station on site and is able to graph the wind speed and direction for a set period of time
- The direction of the slices show which way the wind was going
- The color shows the various speed (5 colors)
- This shows the Wind Projection map from 2016 to 2020
- The predominant wind direction was from the Southwest, heading towards the town of St Marys
- Note that the size of the projection does not indicate the area of impact, only frequency of wind going in that direction, and the colors indicate wind speed.

Wind Projection 2020



- If we compare 2020 to 2016-2020 we see that 2020 is similar to the previous 5 years with a predominantly Southwest Wind direction

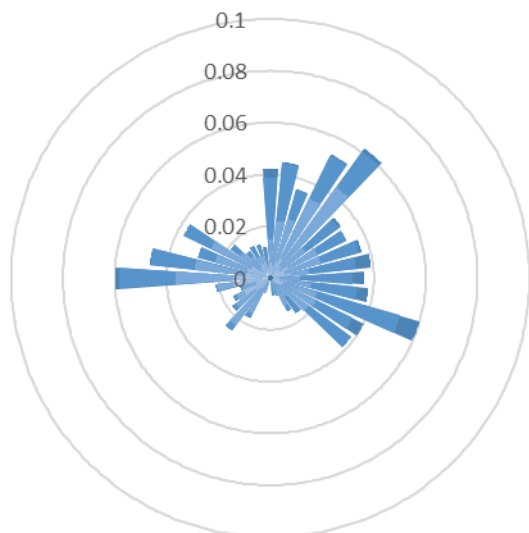
Wind Projection December 2020



- December 2020 was similar to the first 11 months of 2020 with a predominantly Southwest wind direction.

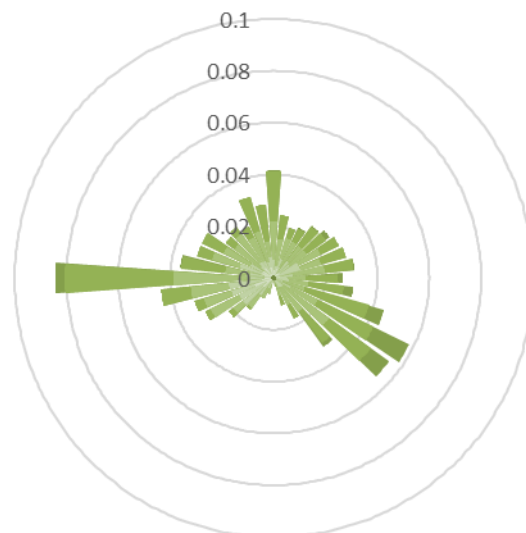
Wind Projection Seasonal 2020

Wind Projection : December 21,
2019 to March 19, 2020



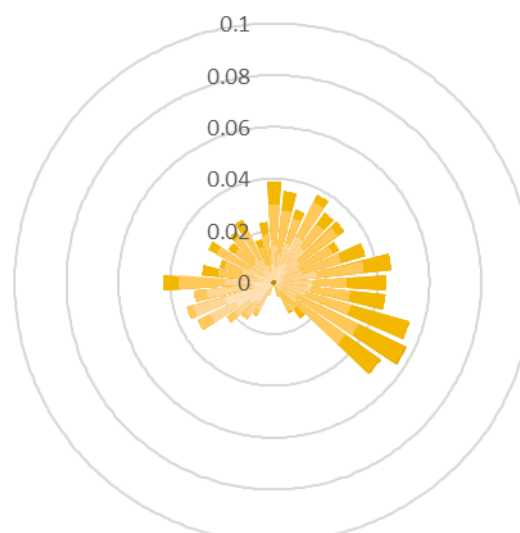
Winter

Wind Projection : March 19, 2020
to June 20, 2020



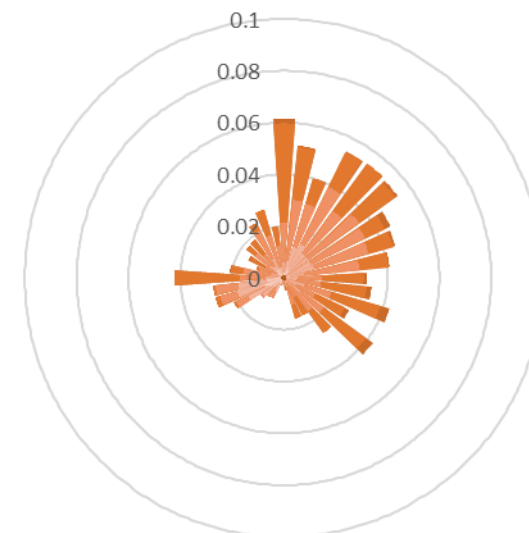
Spring

Wind Projection : June 20, 2020
to September 22, 2020



Summer

Wind Projection : September 22,
2020 to December 21, 2020



Fall

- During all 4 seasons the wind direction is predominant from the South West.

Questions Brought Forward in Advance

Email from Resident March 10th, 2021

I am sick and tired of my car, house and property being coated with a layer of something. (Appears to be dust but who knows what it is???)

All the kids and pets in town including us are breathing this in.

This needs to be stopped immediately. I cannot believe this has not been taken care of, St. Marys Cement has the ability to stop this problem, they need to be made to do it NOW!

Let alone the cost to residents to keep their vehicles, houses and property clean, what about making our children and us sick from breathing whatever this is in.

Thanking you in advance for addressing this serious concern.

Residents

Town of St. Marys

Our kids and pets including us are all breathing this in. This needs to stop.

- St Marys Cement has discussed the procedure for addressing community dust concerns at previous meetings
 - When receiving a dust concern from a resident a representative from the cement plant goes to the residence and takes a sample off of the vehicle.
 - SMC analyzes the sample to determine if it matches any of the materials or products at the facility .
 - If the sample does match one of the materials then SMC will work with the residence to remediate any impact. SMC also examines on site operations for any off standard conditions.
 - Note that SMC also completes daily observations for dust emissions and takes remedial actions as required.
 - When taking the sample SMC also notes any other sources of dust in the vicinity of the complaint including construction, road salt and sand, agricultural, and other adjacent industrial facilities.
 - Previous complaints have shown both products that do not originate from St Marys Cement and products that may have.
- All dust concerns related to specific incidents need to be brought to the plant promptly for proper investigation to be completed.
- The Ministry of Environment has done monitoring in town (permanent station behind the old fire hall, report is posted on the Town website) and did not find any dust exceedances
- The Perth District Health Unit completed a report noting there are no high levels of respiratory related illnesses in St Marys (also posted on the town website).



Wearing a mask: dos and don'ts

- | | |
|---|---|
| ✓ Do clean your hands before and after wearing it | ✗ Don't touch your face or mask while wearing it |
| ✓ Do ensure it covers your nose, mouth and chin | ✗ Don't hang your mask on your ear or wear it under your nose or chin |
| ✓ Do change your mask when wet or dirty | ✗ Don't wear a mask if it is hard to breathe |
| ✓ Do be respectful of people who can't wear masks | ✗ Don't put masks on children under age 2 |
| ✓ Do keep 2 metres/6 feet from others | ✗ Don't share your mask with others |

Round Table & Closing Remarks

Kara Terpstra – Environmental Manager
at 519-284-1020 x 235
or at
kara.terpstra@vcimentos.com